

SJE-Rhombus

**Control Panels
Float Switches ■ Alarm Systems
For Water/Wastewater Pump and Motor Control**



**EUROPEAN WAREHOUSE LOCATED
IN THE NETHERLANDS**

SJE-Rhombus® Headquarters
22650 County Highway 6, PO Box 1708
Detroit Lakes, Minnesota 56502 USA
Phone: +1 218-847-1317
Fax: +1 218-847-4617
Email: sje@sjerhombus.com
www.sjerhombus.com

SJE-Rhombus® Europe
Windmolen 22
7609 NN Almelo
The Netherlands
Phone: +31 548 659 060
Email: europe@sjerhombus.eu
www.sjerhombus.eu

PUMP CONTROL PANELS

EMD Series Control Panels



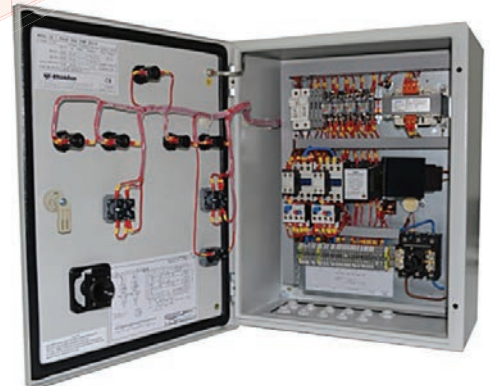
SJE EMD Series are CE rated electro-mechanical control panels designed to control one or two submersible single phase or three phase electric pumps in water and wastewater applications.

The control panels operate the pumps based on the liquid level from signals provided from float or pressure switches.



Standard Features

- Input Voltage:
Single phase: 50/60Hz 230V; Three phase: 50/60Hz 400V
- Power:
0.25~4kW (single-phase); 0.25~37kW (three-phase)
- Direct On Line (DOL)
- 24V transformer for control circuit
- Auto/Off/Manual selector switches for each pump
- Main power disconnect switch with door interlock handle
- LED indicator lights for power on, pump run and pump fault
- High level alarm buzzer and silence push button
- IP55 enclosure
- Automatic alternating of pumps (dual pumps)
- Thermal Overload relay with phase loss sensitivity
- Motor short-circuit and overload protection



Options

- Alarm beacon and buzzer
- Phase loss, phase reversal, over-voltage, under-voltage protection
- Hour meter for each pump
- Cycles counter for each pump
- Voltmeter/Ammeter
- Additional options available upon request

ALARM SYSTEMS

Tank Alert® EZ CE



The Tank Alert® EZ CE certified indoor/outdoor alarm is used to monitor liquid levels in pump chambers, holding tanks, lift stations and various other water and wastewater applications.

- Input 240V 50/60 Hz
- Integrated LED beacon - top half illuminates upon alarm
- Alarm test/silence switch
- Green power on LED indicator
- Automatic alarm reset
- Auxiliary contacts for remote devices



U.S. Patent No.
8,737,672 and D695,640

CONTROL & PUMP FLOAT SWITCHES

SJE MegaMaster™ Control Float Switch



SJE MegaMaster™ is a mechanically-activated, narrow-angle control float switch designed for municipal water and sewage applications. The internal switching mechanism has unique **gold cross-point contacts** for reliable control of current up to **1 Amp**.

- **Electric rating:** 1 A, 125 VAC and 30 VDC
- **Control differential:** 10 degrees above and 10 degrees below horizontal
- **Cable:** H05RN-F 0.75mm², 3 conductor



SJE SignalMaster® Control Float Switch



SJE SignalMaster® is a mechanically-activated, narrow-angle control float switch. It is highly reliable and is not sensitive to rotation or turbulence.

- **Electric rating:** 5A, 125/250 VAC, 50/60 Hz
- **Cable:** 18/2 SJOW
- **Control differential:** 4 cm (1.5 in) above or below horizontal
- **SJE SignalMaster® SPDT Control Float Switch** (3-wire) version available



SJE MilliAmpMaster™ Control Float Switch



SJE MilliAmpMaster™ is a mechanically-activated control float switch designed to activate low current AC or DC applications. Available in narrow and wide angle configurations.

- **Electric rating:** 0.160mA - 100mA; 30 VDC, 125 VAC; 1mA, 5 VDC
- **Cable:** 18/2 SJOW
- **Control differential:** Narrow-angle: 4 cm (1.5 in); Wide-angle: 10 cm (4 in) above or below horizontal



SJE Quest® Pump Float Switch



The SJE Quest® and SJE Quest® II are mechanically-activated pump float switches designed for wastewater and water applications. The SJE Quest® includes a patented sealing design that provides excellent protection from moisture entering the float housing.

- **Electric rating:** 10(10)A 250 VAC or 10(8)A 250 VAC or 6(4)A 250 VAC
- **Cable:** H07RN-F 1mm² 2 or 3 conductor; H05RN-F .75mm² 2 or 3 conductor
- **Pumping range:** 23-91cm (9-36 in)



SJE MicroMaster® Pump Float Switch



SJE MicroMaster® is a mechanically-activated pump float switch designed for wastewater and water applications.

- **Electric rating:** 10A, 125/250 VAC, 50/60Hz Single phase
- **Cable:** 18/2 SJOW
- **Pumping range:** 20-91cm (8-36 in)
- **SJE MicroMaster® Plus** (13 amp) and **SJE MicroMaster® SPDT** (3-wire) versions available



SJE VerticalMaster® II Pump Float Switch



SJE VerticalMaster® II is a mechanically-activated pump float switch designed for smaller water and wastewater pump chambers with limited space.

- **Electric rating:** 10A, 125/250 VAC, 50/60Hz Single phase
- **Cable:** 18/2 SJOW or SJTOW
- **Pumping range:** 2-17cm (.75-6.5 in)
- **SJE VerticalMaster® II Plus** (13 amp) version available



SJE-Rhombus Corporate Headquarters, Detroit Lakes, Minnesota, USA



Ashland, Ohio



Clearwater, Florida



Milford, Ohio



New Hope, Minnesota



Plymouth, Minnesota



Suzhou, China



Vacaville, California

Since 1975, SJE-Rhombus® has become a **global leader in the water and wastewater industry** by developing innovative control products from locations across North America and Asia that offer reliability and performance customers can depend on. SJE-Rhombus® offers a wide variety of control products for Residential and Commercial markets and serves the Irrigation, Municipal, and Industrial markets under the PRIMEX® brand.

SJE-Rhombus controls can be found in applications including:

- Wastewater
- Lift Stations
- Sumps
- Pressure Booster Systems
- Sewers
- Treatment Plants
- Drains
- Wells
- Irrigation Systems

From control panels utilizing embedded circuit board technology to complete control/monitoring systems designed and built to customer specifications, SJE-Rhombus represents the **most reliable integration of engineering and manufacturing in the industry.**

New product designs endure **extensive in-house and field testing** before submittal to recognized independent laboratories for **safety testing and approval.** This commitment to quality ensures customers with a **dependable, trouble free product.** SJE-Rhombus offers a five-year limited warranty on most products.

SJE-Rhombus offers the most complete line of control products in the industry and now offers a select group of products through our regional warehouse in Oldenzaal, The Netherlands for fast delivery to our European customers. Other control products, including customized controls and non-European specified controls, are available upon request.

For more information or to place an order, please contact:

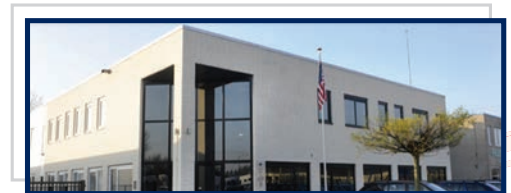
SJE-Rhombus® Europe

Windmolen 22 7609 NN Almelo, The Netherlands

Phone: +31 548 659 060

Email: europe@sjerhombus.eu

www.sjerhombus.eu



Almelo, The Netherlands

Follow us on:



9500245B

© 2017 SJE-Rhombus Rev 06/17