

10mm CSV Cartridge Style Valve



Humphrey

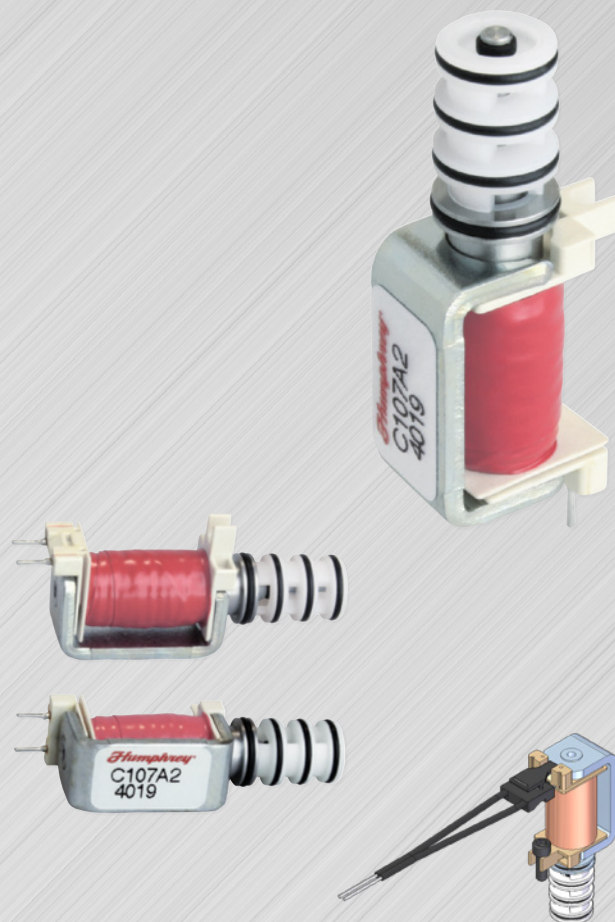
Miniature 2- or 3-Way Pneumatic Solenoid Valve

Humphrey 10mm CSV Solenoid Valve was purposely engineered for optimal flow and integration into compact spaces required from today's high tech device and instrument maker. The thoughtful cartridge design provides more porting options and new possibilities in miniature pneumatic system design.

Purchase the CSV only and design your own manifold porting solution, or let our Humphrey Engineered Solutions Team listen to your expectations and model one up for you.

FEATURES

- Maximized Flow Capacity
- Fast Response, Direct-Acting Design
- Designed for user flexibility and integration into compact devices or spaces
- Pressure Balanced – ready for use as 2- or 3-way
- Normally Closed or Normally Open
- Customizable for different power and flow requirements



ACCESS ONLINE CATALOG

Obtain 3D CAD Download, CAD Viewer,
2D Dimensional Drawings, Product Images,
DataSheet PDFs, Product Accessories



How to Order

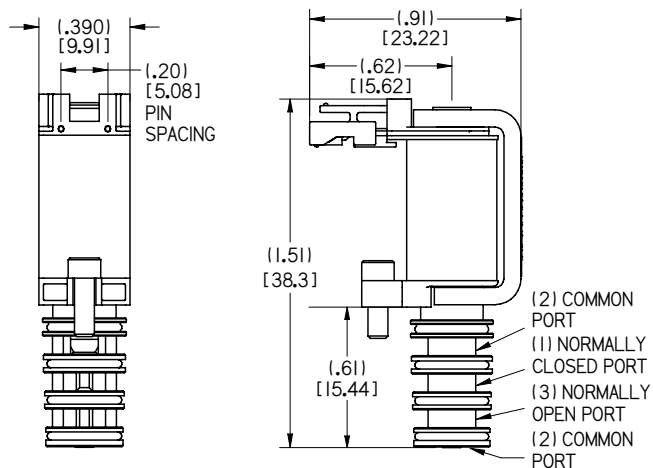
10mm CSV Cartridge Style Valve

C10	7A		2		C107A2
MODEL	ELECTRICAL ENTRY 7A: Axial Plug-In 7P: Perpendicular Plug-In	SEAL nil: NBR F: FKM	VOLTAGE 2: 12VDC 4: 24VDC	CONNECTOR nil: Plug-In Electrical Connector with 30cm lead wires included X: Plug-In Electrical Connector excluded or leads	ORDER EXAMPLE

10mm CSV Cartridge Style Valve

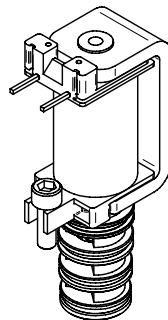
SPECIFICATIONS	10MM CSV
TYPE OF OPERATION	Direct Solenoid
FUNCTION	2- or 3-Way, NC or NO
MEDIA	Air, Oxygen, Inert Gas
PRESSURE RATING - PSI (BAR)	VAC-30 (2)
RESPONSE TIME (TYP)	10ms on, 6ms off
MAXIMUM FLOW @ 30 PSI	40 SLPM (.075 Cv)
AMBIENT TEMPERATURE	32-125° F (0-52° C)
POWER CONSUMPTION (WATTS)	
12V MODEL	2
24V MODEL	2
NORMAL RESISTANCE (OHMS)	
12V MODEL @72°F (22°C)	72
24V MODEL @72°F (22°C)	100
WETTED MATERIALS	Acetal, LCP, Stainless Steel, NBR (standard) or FKM
WEIGHT – OZ (GRAMS)	.33 (11)
COMPLIANCE	RoHS, REACH

Purposely designed to use one or both common ports for maximum manifold flexibility.



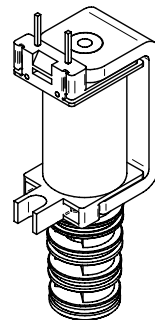
PERPENDICULAR PIN OPTION

Two 0.025" [0.64] Square Pins



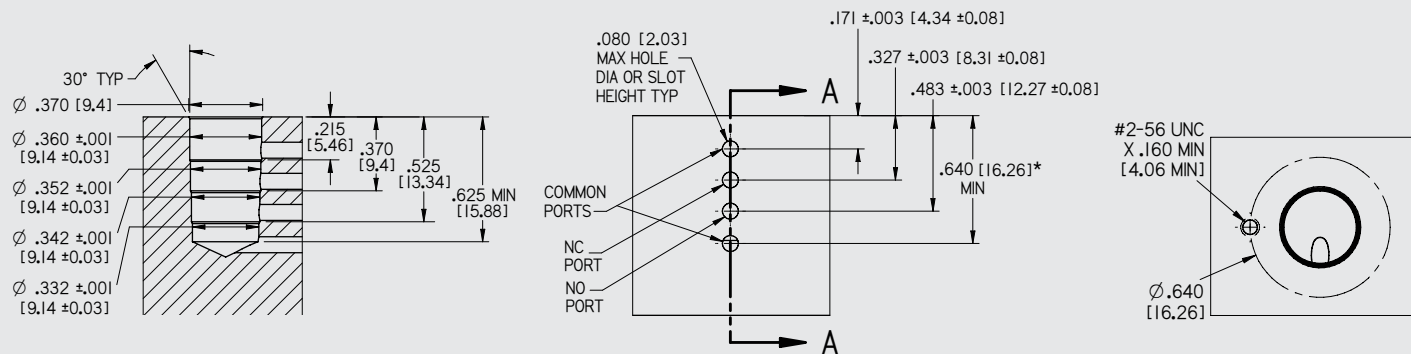
AXIAL PIN OPTION

Two 0.025" [0.64] Square Pins



MANIFOLD INTERFACE

*In order to use the bottom common port, this dimension is needed.



Certified: ISO 9001:2015

HUMPHREY-PRODUCTS.COM

Humphrey Life Science Group
© 2019 Humphrey Products Company, Inc.
Printed in U.S.A.

LSGDS-10MMCSV-2019

Humphrey Products Company
5070 East N Avenue
Kalamazoo, MI 49048 USA
E: lsg@Humphrey-Products.com
P: 1.800.477.8707



Humphrey